



# SHiFT<sup>®</sup>

## MODULUS

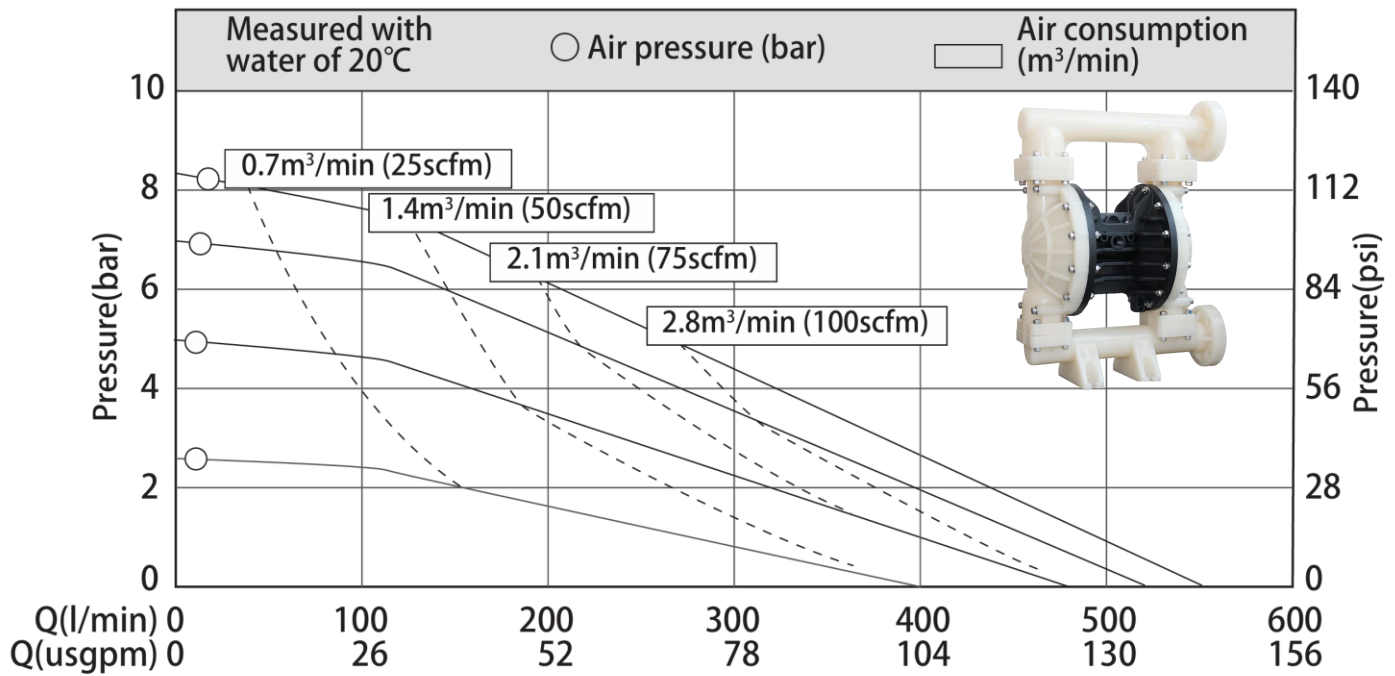
Care and Maintenance  
Manual

# M50

Bolted  
Plastic  
Pumps



## Performance Curve



### Technical Parameters

Parameter	Unit	Value
Suction Lift - dry	mwc	5
Suction lift - wet	mwc	8
Solids size	mm	6
Air inlet	inch	1/2
Max air inlet pressure	bar	8.4

### Material of Construction

Pump Part	Material
Pump body	PP, PVDF
Diaphragm	Santoprene (ST), Teflon (TF), Hytrel
Seat	PP, PVDF
Centre block	PP

### Weight

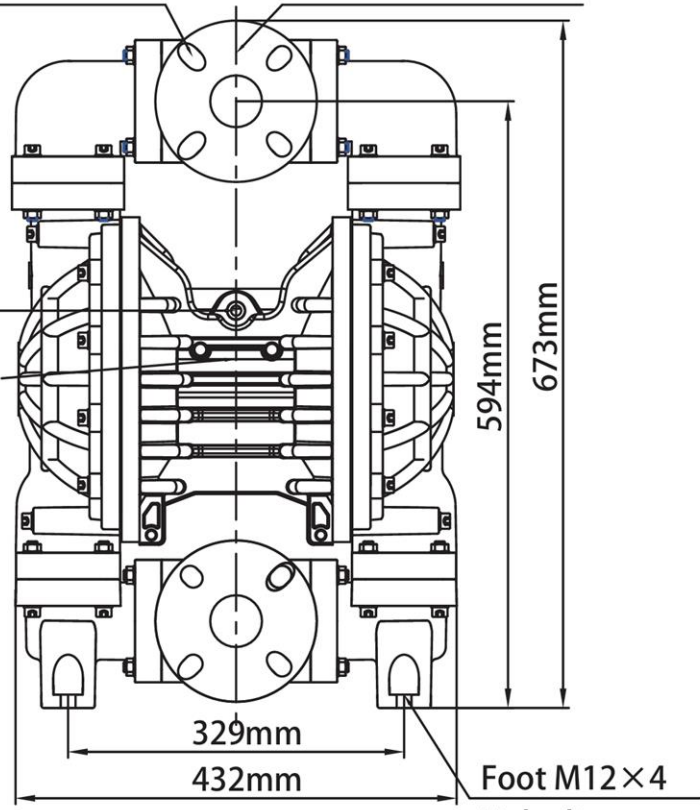
Pump type	Weight
Polypropylene	25kg
PVDF	34kg

Dimensional Drawings

Center distance  
125mmX4-M16

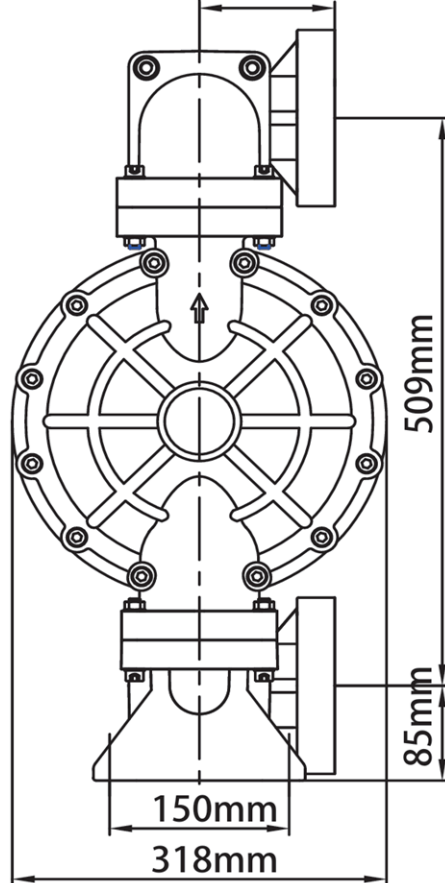
DIN / ANSI 50

Air inlet  $\frac{1}{2}$ " BSP/NPT  
Air outlet  $\frac{3}{4}$ " BSP/NPT



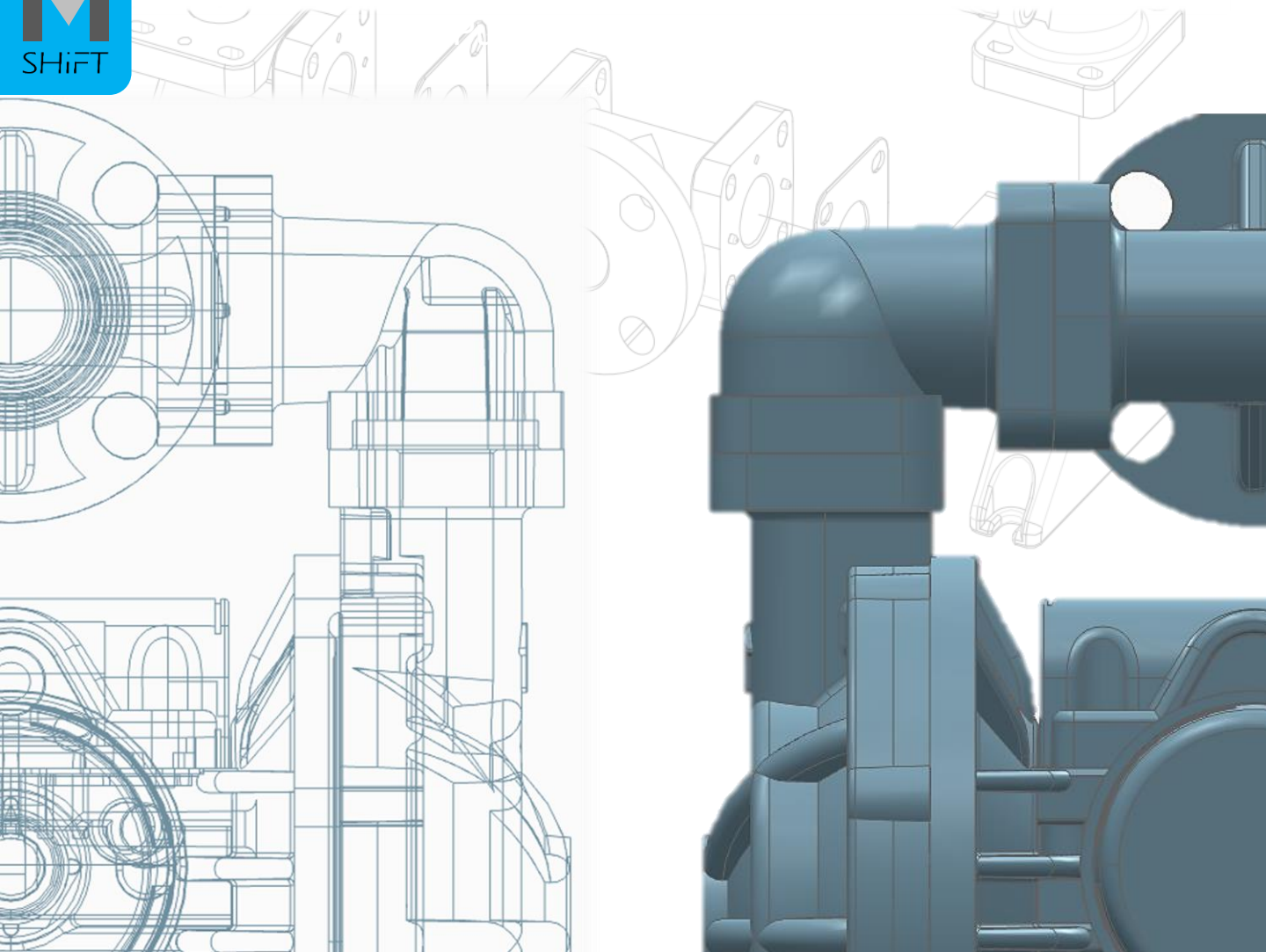
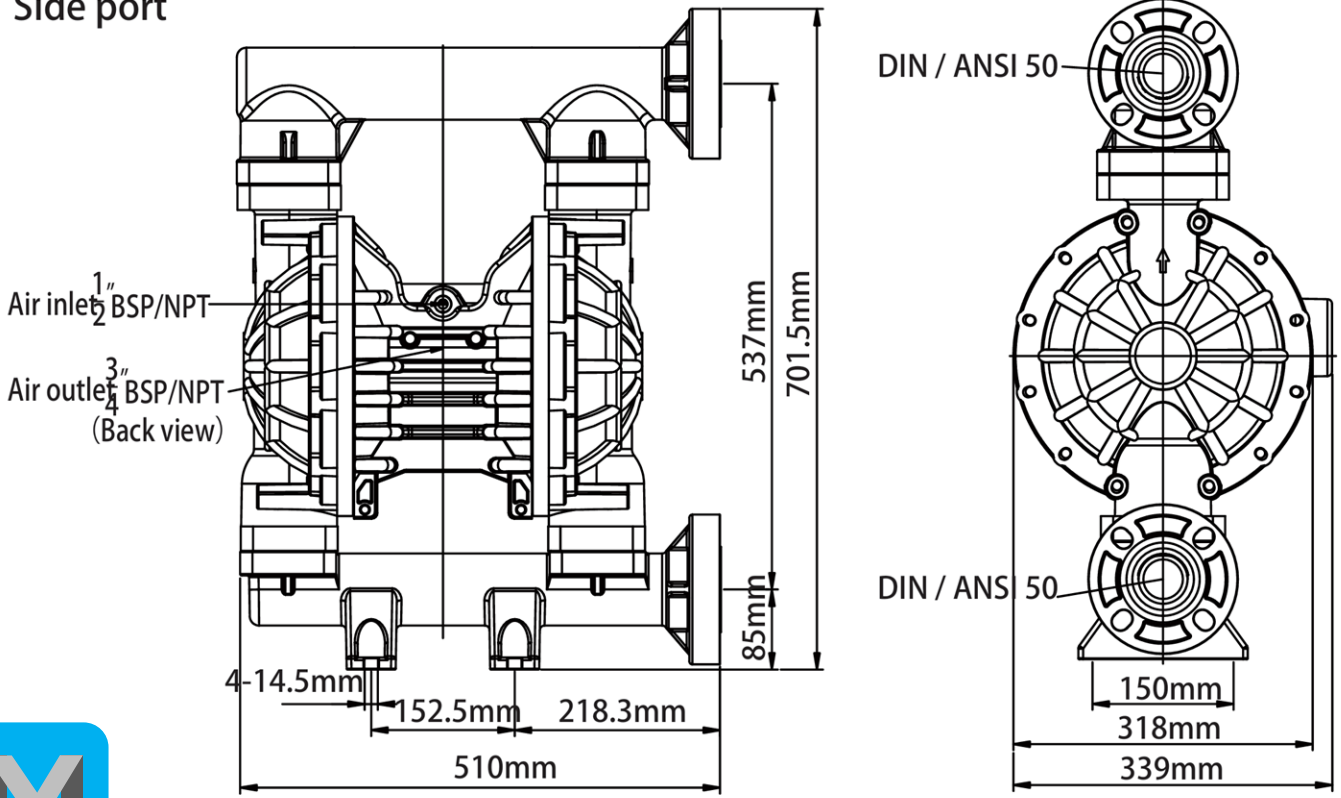
Hole distance  
329mm x 150mm

115mm

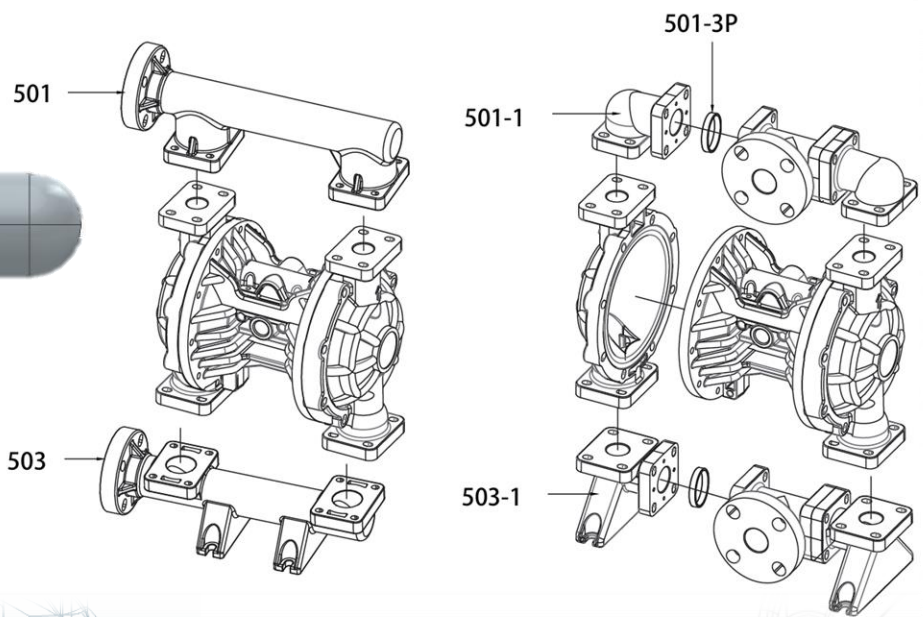
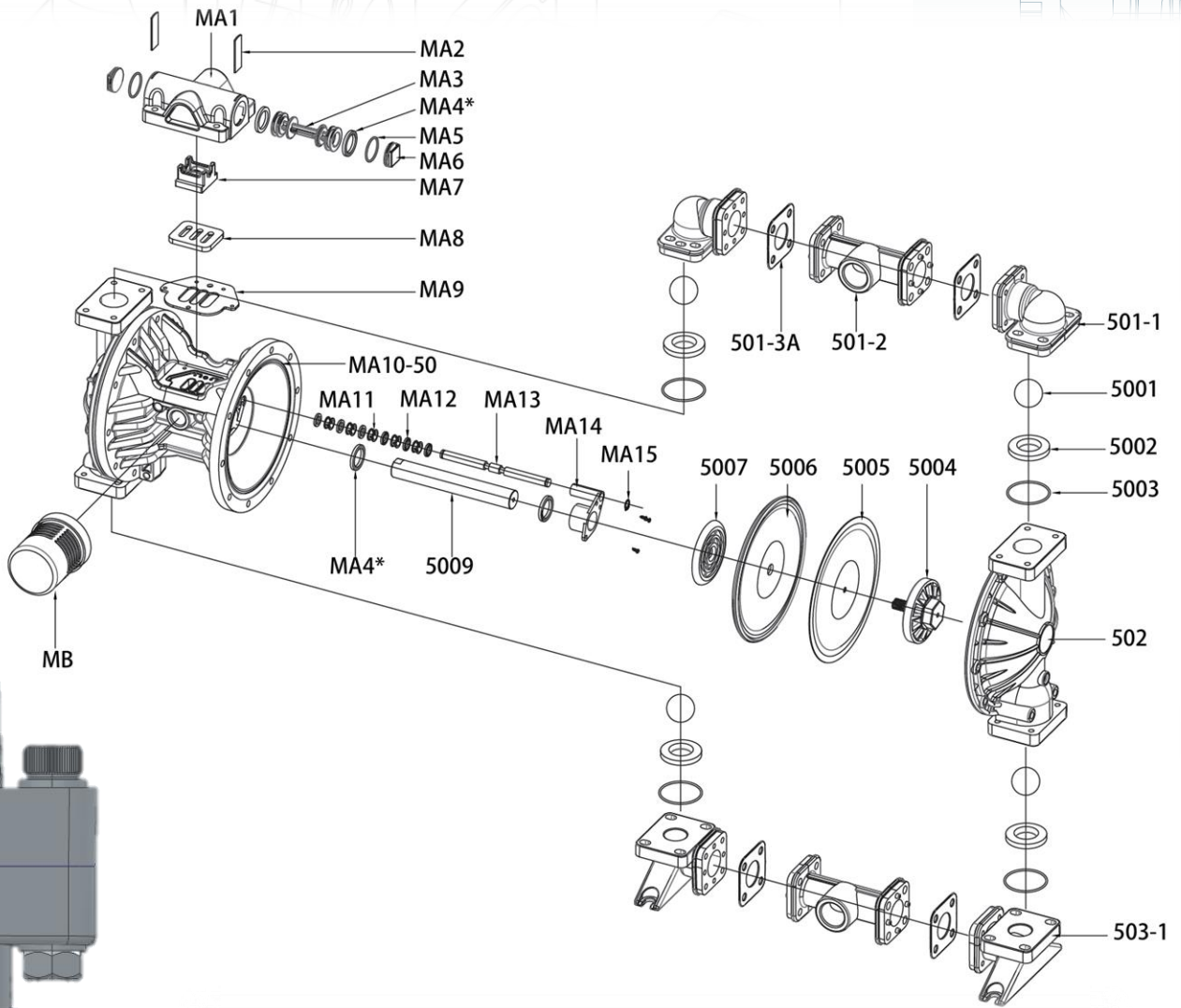


Dimensional Drawings

Side port



Part Numbers



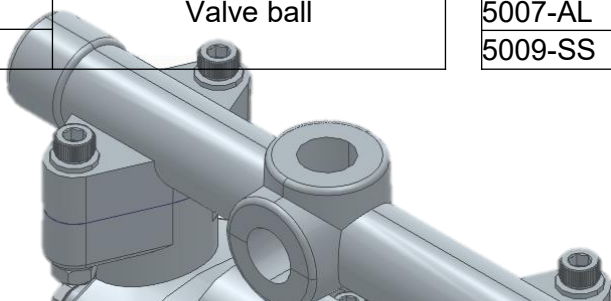
## Part Numbers

Part code	Name
MA1-KV	Air valve housing
MA2-SS	Plug locking plate
MA3-PM	Piston
MA4-VT	V-ring
MA5-VT	Plug O-ring
MA6-KV	Plug
MA7-PM	Pilot valve
MA8-SS	Valve plate

Part code	Name
MA9-ST	Air valve gasket
MA10-50-PP	Center block
MA11-PM	Reversing valve
MA12-VT	Shaft O-ring
MA13-SS	Shaft
MA14-PM	Rod locking plate
MA15-SS	Snap ring
MB-PP	Muffler

Part code	Name
501-SS	Discharge Manifold
501-LL	
501-PP	
501-KV	
501-AC	
501-1-PP	Upper Elbow
501-1-AL	
501-1-KV	
501-2-PP	TEE
501-2-AL	
501-2-KV	
501-3P-HY	
501-3P-ST	TEE Gasket (Plastic pump)
501-3P-TF	
501-3A-HY	TEE Gasket (AL pump)
501-3A-ST	
501-3A-TF	
503-SS	Suction Manifold
503-LL	
503-PP	
503-KV	
503-AC	
503-1-PP	Bottom Elbow
503-1-AL	
503-1-KV	
502-KV	Fluid chamber
502-PP	
502-AL	
502-SS	
502-LL	
502-AC	
5001-TF	
5001-ST	Valve ball
5001-HY	

Part code	Name
5001-BN	Valve ball
5001-EP	
5001-SS	
5001-LL	
5001-CM	
5002-PP	Valve seat
5002-AL	
5002-TF	
5002-ST	
5002-HY	
5002-BN	
5002-EP	
5002-VT	Seat O-ring
5002-SS	
5002-LL	
5003-TF	Plate
5003-BN	
5003-EP	
5003-VT	
5004-KV	Teflon diaphragm
5004-PP	
5004-AL	
5004-SS	
5004-LL	Rubber diaphragm
5005-TF	
5006-ST	
5006-HY	
5006-BN	
5006-EP	Inner plate
5006-GE	
5006-VT	
5007-AL	Diaphragm Rod
5009-SS	



The background of the entire page is a technical line drawing of a complex mechanical assembly, likely a pump or motor. The drawing is rendered in a light blue color and is centered on the page. It shows various components such as a central shaft, bearings, housing, and various ports. The drawing is a cross-sectional view, showing the internal structure of the machine. The top half of the drawing is partially obscured by a dark grey rounded rectangle containing the text 'MODULUS RANGE'.

# MODULUS

RANGE

Powered by:  **AQSI**  
INDUSTRIES