



SHiFT[®]

MODULUS

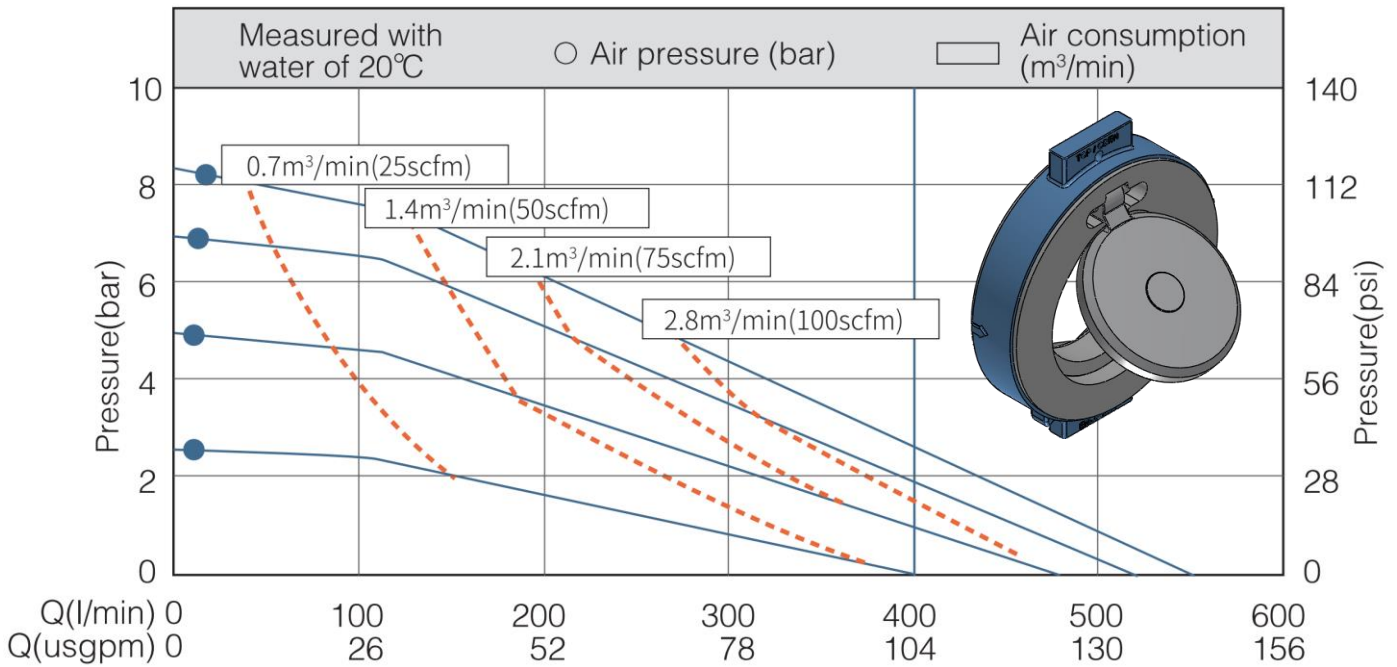
Care and
Maintenance
Manual

M50

Bolted
Plastic
Flap Valve
Pump



Performance Curve



Technical Parameters

Parameter	Unit	Value
Suction Lift - dry	mwc	5
Suction lift - wet	mwc	8
Solids size	mm	40
Air inlet	inch	1/2
Max air inlet pressure	bar	8.4

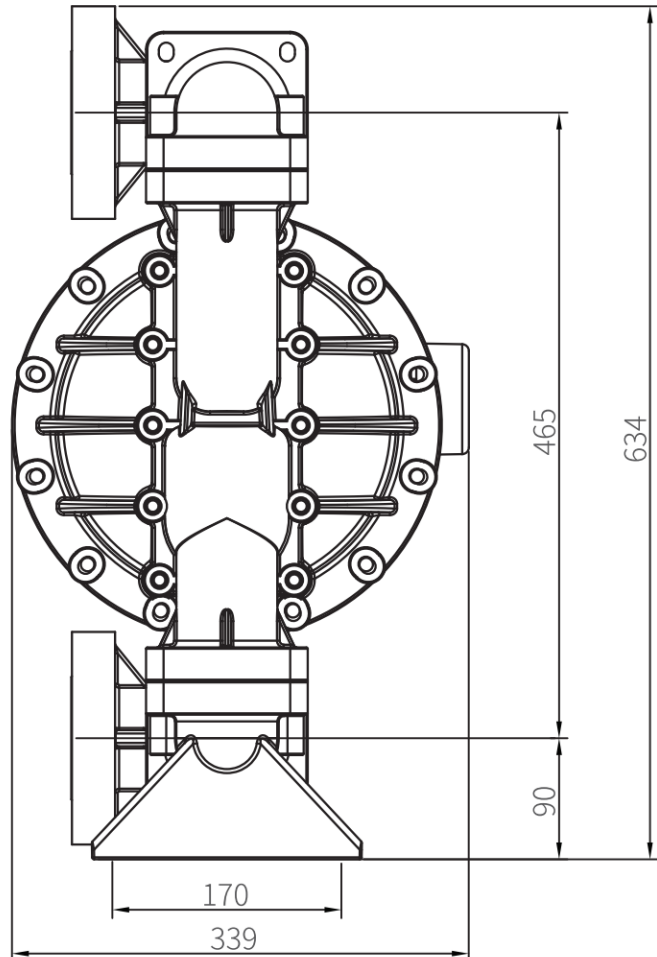
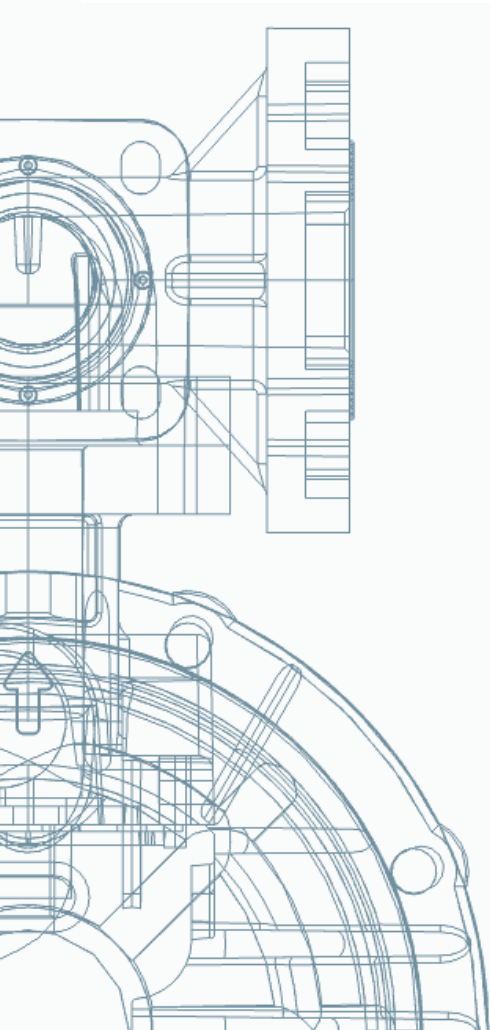
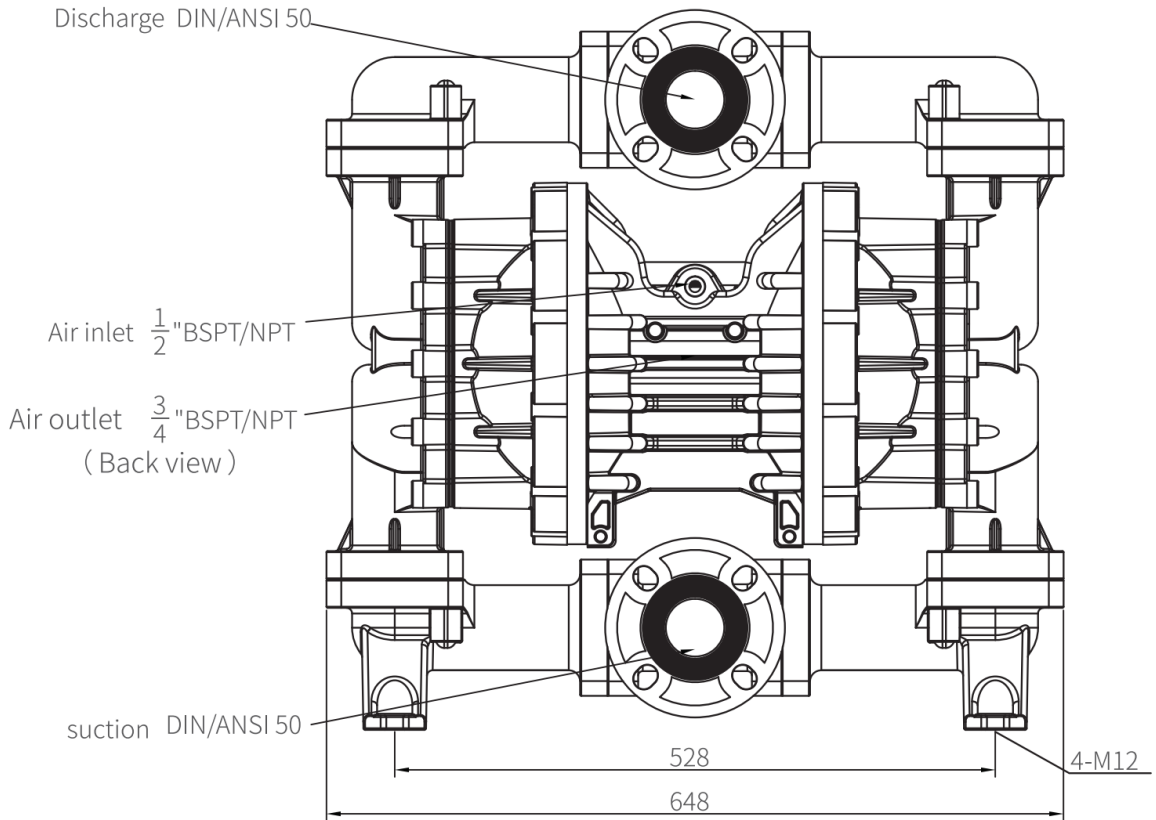
Material of Construction

Pump Part	Material
Pump body	PP
Diaphragm	Santoprene (ST), Teflon (TF), Hytrel (HY)
Seat	SS
Centre block	PP

Weight

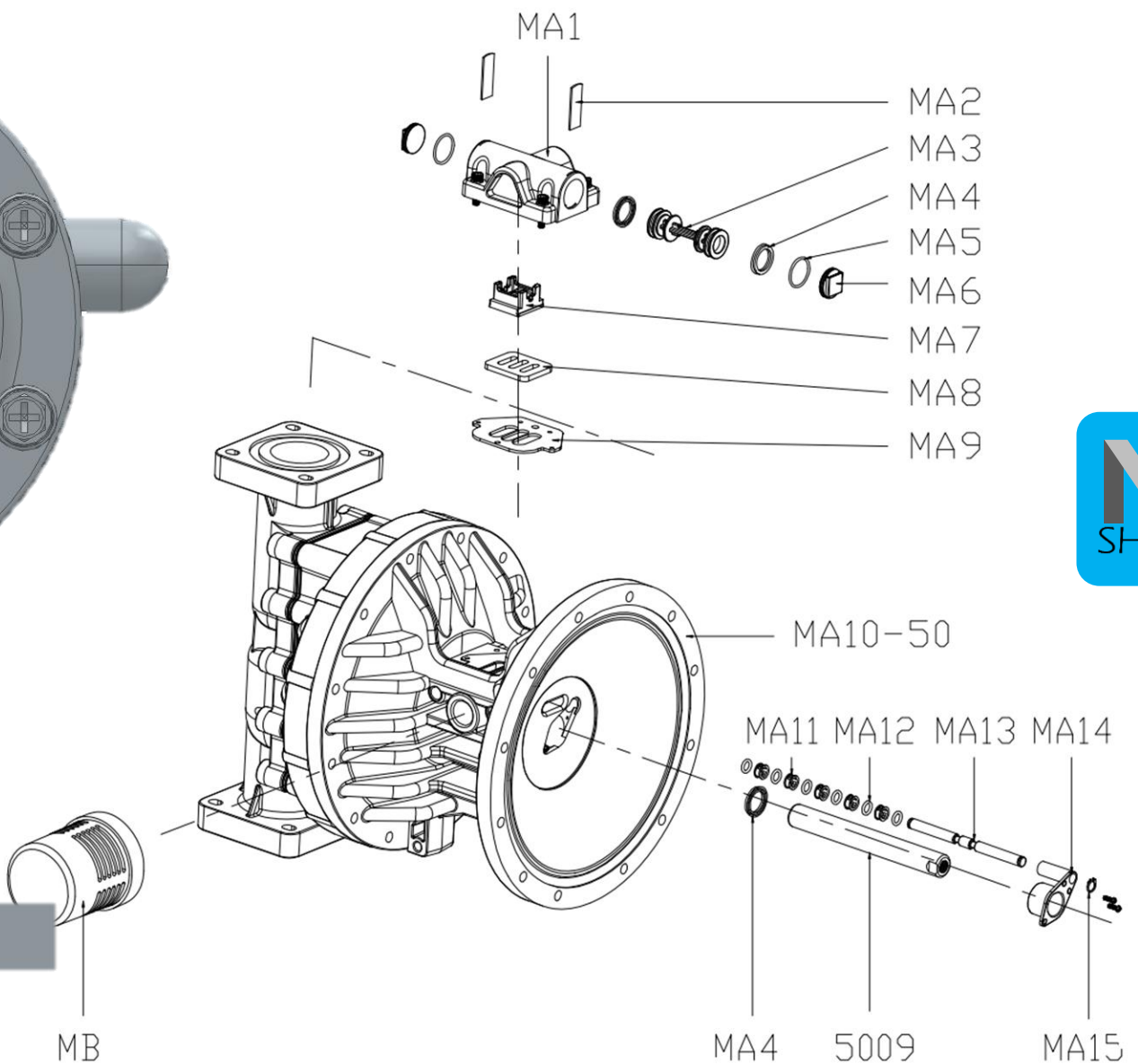
Pump type	Weight
Polypropylene	31kg

Dimensional Drawings: PP

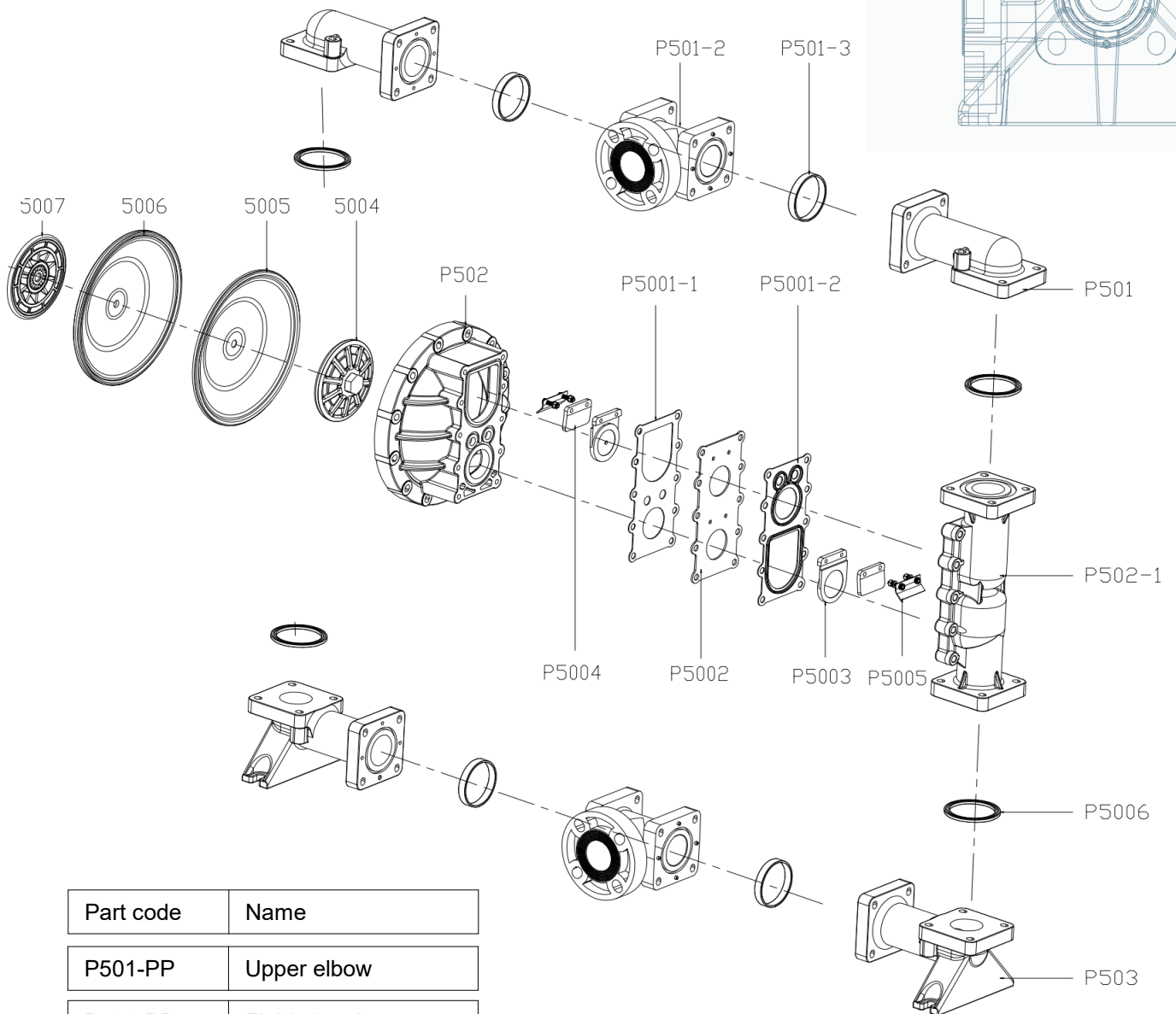


Part Numbers: Poly centre

MA1-KV	Air valve housing	MA9-ST	Air valve gasket
MA2-SS	Plug locking plate	MA10-50-PP	Center block
MA3-PM	Piston	MA11-PM	Reversing valve
MA4-VT	V-ring	MA12-VT	Shaft O-ring
MA5-VT	Plug O-ring	MA13-SS	Shaft
MA6-KV	Plug	MA14-PM	Rod locking plate
MA7-PM	Pilot valve	MA15-SS	Snap ring
MA8-SS	Valve plate	MB-PP	Muffler



Part Numbers: Poly centre



Part code	Name
P501-PP	Upper elbow
P502-PP	Fluid chamber
P502-1-PP	Chamber plate
P503-PP	Bottom elbow
P5006-ST	Gasket
P5001-1-ST	Gasket
P5001-2-ST	Gasket
P5002-SS	Plate
P5003-HNBR	Flap valve
P5004-HNBR	Gasket
P5005-SS	locking plate

P501-2-PP	TEE
P501-3P-HY	TEE Gasket
P501-3P-ST	TEE Gasket
P501-3P-TF	TEE Gasket
5004-PP	Out plate
5004-PP	Out plate
5006-ST	Rubber diaphragm
5007-CS	Inner plate
5009-SS	Diaphragm rod



The background of the entire page is a technical line drawing of a complex mechanical assembly, likely a pump or motor. The drawing is rendered in a light blue color and is centered on the page. It shows various components such as a central shaft, bearings, housing, and mounting brackets. The drawing is a cross-sectional view, showing the internal structure of the machine. The top half of the drawing is partially obscured by a dark grey rounded rectangle containing the text 'MODULUS RANGE'.

MODULUS

RANGE

Powered by:  **TAQS**
INDUSTRIES